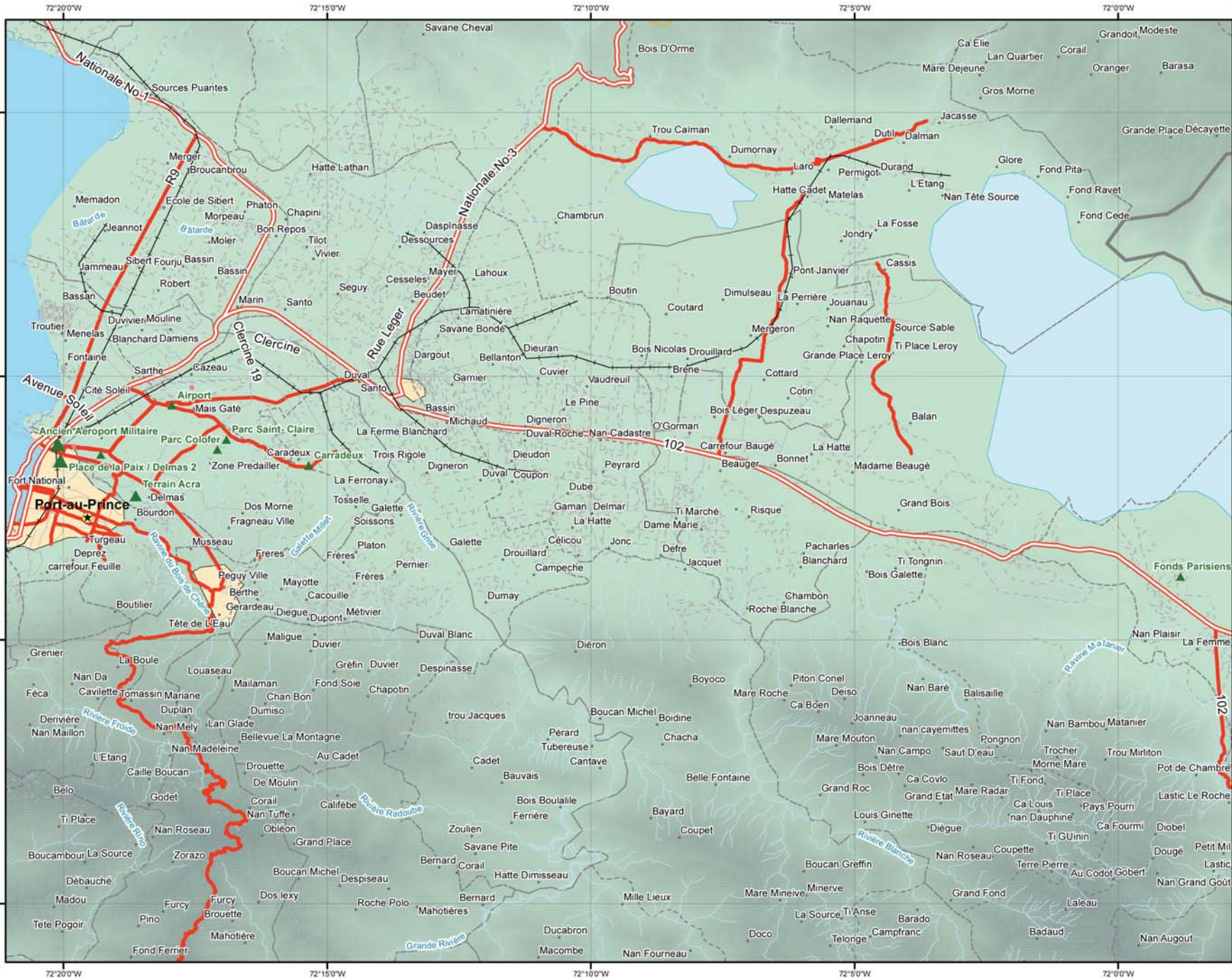


HAITI - IDP camps, IOM/CCCM Planned sites as of 17/02/2010

Publication date: 19/02/2010



Legend

CCCM - Planned sites Road

- tertiary
- Primary
- Secondary
- road
- Track
- Railroad
- River

Populated place

- 1st ord. capital
- 2nd ord. capital
- Other capital
- Town/Village

Airdrome

- Airports
- Airfields
- HLZ
- Unspecified

Adm. boundary

- International
- 1st order
- 2nd order
- 3rd order
- 4th order
- 5th order
- Other
- Coastline
- Built-up Area
- Inland Water

Individuals

- <5k
- 5k - 10k
- >10k

N

1:125,000 on A3 paper format

0 0.7 1.4 2.1 2.8 3.5 km

Geographic Coordinates - WGS84

Source of IDP is IOM/CCCM. Source for Vector Map level 0 (VMAPO) datasets was the United States National Imagery and Mapping Agency. Names and boundaries on this map do not imply acceptance or recognition by the World Food Programme or by the United Nations. Facts and figures in this map are accurate and up to date to the best of our knowledge at the time of writing but subject to change at any time. The World Food Programme makes no warranty or representation as to the reliability or accuracy of the data contained herein. This map is for planning purposes only. © United Nations World Food Programme 2007. All rights reserved.

Produced by ITHACA in cooperation with WFP