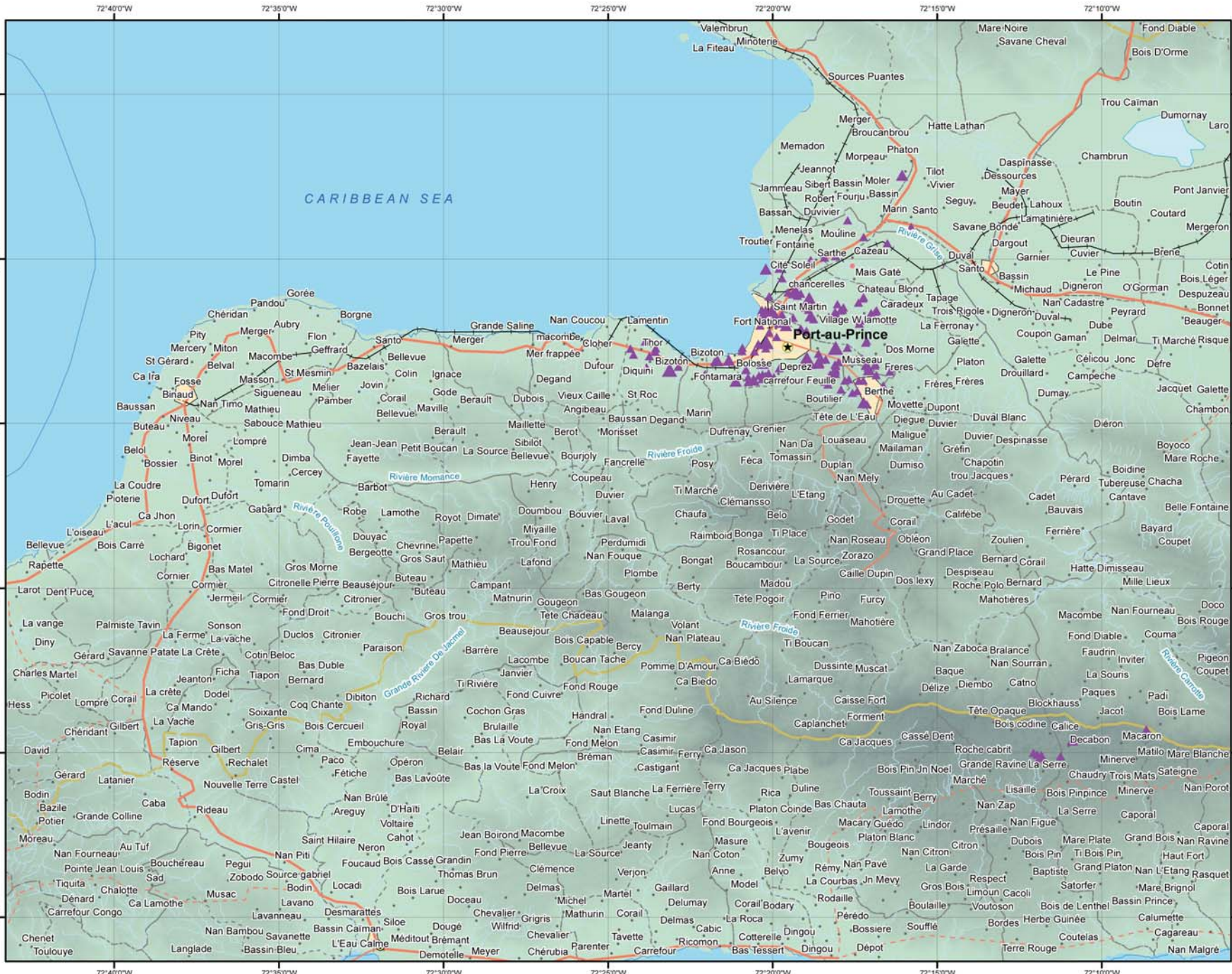


HAITI - IDP camps, IOM/CCCM Spontaneous sites as of 17/02/2010

Publication date: 19/02/2010



Legend

Individuals	Road
▲ <5k	Highway
▲ 5k - 10k	Primary
▲ >10k	Secondary
Populated place	Tertiary
★ 1st ord. capital	Trail
● 2nd ord. capital	Unspecified
● Other capital	Railroad
• Town/Village	River
Airdrome	Adm. boundary
✈ Airports	International
✈ Airfields	1st order
• HLZ	2nd order
• Unspecified	3rd order
	4th order
	5th order
	Other
	Coastline
	Built-up Area
	Inland Water

1:200,000 on A3 paper format
 0 1 2 3 4 5 km
 Geographic Coordinates - WGS84

Source of IDP is IOM/CCCM. Source for Vector Map level 0 (VMAPO) datasets was the United States National Imagery and Mapping Agency. Names and boundaries on this map do not imply acceptance or recognition by the World Food Programme or by the United Nations. Facts and figures in this map are accurate and up to date to the best of our knowledge at the time of writing but subject to change at any time. The World Food Programme makes no warranty or representation as to the reliability or accuracy of the data contained herein. This map is for planning purposes only. © United Nations World Food Programme 2007. All rights reserved.

Produced by **ITHACA** in cooperation with **WFP**