

SECTION III
CONTAINMENT AND CONTROL/ERADICATION

PART A.	OUTLINE OF SEQUENCE OF EVENTS	Page 1
	FLOW CHART - MOBILIZATION OF THE NATIONAL EMERGENCY ANIMAL DISEASE TASK FORCE	" 3
PART B.	COMPONENTS AND DESCRIPTION OF TASKS AND FUNCTIONS	" 4
1.	NATIONAL EMERGENCY ANIMAL DISEASE COMMITTEE (NEADCOM)	" 4
2.	EMERGENCY ANIMAL DISEASE TASK FORCE (EADTAF)	" 5
2.2.1.	TASK FORCE COORDINATOR (TFCo)	" 5
3.	REGIONAL FIELD COMPONENT (RFC)	" 6
3.2.1.	REGIONAL FIELD COORDINATOR (RFCo)	" 6
3.2.2.	REGIONAL VETERINARY OFFICER ASSIGNED (RVO/A)	" 8
3.2.3.	ADMINISTRATIVE OFFICER (AO)	" 10
3.2.4.	INSPECTION AND DIAGNOSIS OFFICER (IDO)	" 11
3.2.5.	SUPPLY OFFICER (SO)	" 12
3.2.6.	QUARANTINE AND CLEANING/DISINFECTION OFFICER (Q-C/DO)	" 13
3.2.7.	FIRE CHIEF (FCh)	" 15
3.2.8.	APPRAISAL TEAM (AT)	" 16
3.2.9.	INFORMATION OFFICER (IO)	" 17
4.	MILITARY COMPONENT (MC)	" 18
4.2.1.	DISPOSAL AND HEAVY EQUIPMENT OFFICER (DHEO)	" 18
5.	POLICE COMPONENT (PC)	" 19
5.2.1.	OFFICER-IN-CHARGE OR POLICE DETAIL (OIC/PD)	" 19
6.	FIELD COMPONENT (FC)	
6.2.1.	PARISH VETERINARY OFFICER (PAVO)	" 20
6.2.2.	ANIMAL HEALTH ASSISTANT (AHA)	" 22
7.	LABORATORY COMPONENT (LC)	" 23
7.2.	LABORATORY TEAM LEADER (LTL)	" 23
8.	LEGAL COMPONENT (LG)	" 24
8.2.	LEGAL OFFICER (LO)	" 24
	CHART - ORGANIZATION OF THE REGIONAL FIELD COMPONENT OF THE NATIONAL EMERGENCY ANIMAL DISEASE TASK FORCE	" 25

PART C.	QUARANTINE PROCEDURES	
	1. AUTHORITY TO QUARANTINE	page 26
	2. QUARANTINE OF SUSPECTED PREMISES AND SUSPENSION OF ALL MOVEMENTS	" 27
	3. QUARANTINE OF INFECTED PREMISES	" 28
	4. ESTABLISHMENT OF QUARANTINE ZONE AND BUFFER ZONE	" 29
	5. PROCEDURES OF INSPECTION FOR QUARANTINE AND BUFFER ZONE	" 30
	6. QUARANTINE AND BUFFER ZONE SECURITY (POLICE AND MILITARY)"	32
	7. QUARANTINE OF LIVESTOCK CONCENTRATION POINTS	" 34
	8. MOVEMENT OF ANIMALS TO SLAUGHTER	" 35
	9. CONTROL OF MILK AND MILK PRODUCTS	" 36
	10. CONTACT PREMISES	" 38
	11. EMBARGO ZONE (ZONE 3) AND MORATORIUM ON ANIMAL MOVEMENT	" 39
	12. QUARANTINE RELEASE	" 41
PART D.	NOTIFICATION AND INVESTIGATION PROCEDURES	
	1. PROCEDURES FOR INVESTIGATING A SUSPECTED CASE (OR OUTBREAK) OF AN EMERGENCY ANIMAL DISEASE	" 42
	2. PROCEDURES WHEN AN EMERGENCY ANIMAL DISEASE IS MILDLY OR SLIGHTLY SUSPECTED	" 43
	3. GUIDELINE FOR NOTIFICATION	" 44
PART E.	CLEANING AND DISINFECTION PROCEDURES FOR FOREIGN ANIMAL DISEASES	
	1. RECOMMENDED CLEANING AND DISINFECTION PROCEDURES	" 45
	2. INSTRUCTION FOR FIELD USE OF DISINFECTANTS	" 46
	3. STRENGTH AND DILUTIONS FOR THE RECOMMENDED DISINFECTANTS	" 47
	4. RECOMMENDED DISINFECTANTS FOR SOME EXOTIC DISEASES	" 48
	5. PRECAUTIONS TO PERSONS USING DISINFECTANTS	" 49
	6. INSTRUCTION TO BURN ANIMAL CARCASSES	" 49A

PART F.	APPRAISAL AND INDEMNITY PROCEDURES	50
	1. APPRAISAL TERMS	51
	2. APPRAISAL PROCEDURES	
PART G.	FORMS	
FORM No. 2	CHECKLIST FOR HANDLING SUSPECTED EMERGENCY ANIMAL DISEASE	54
FORM No. 3	SAMPLE SUBMISSION FORM AND FIELD REPORT OF ANIMAL DISEASE INVESTIGATION	56
FORM No. 4	INDEMNITY CLAIM FOR ANIMALS AND MATERIALS DESTROYED	57
FORM No. 5	TELEPHONE REPORT	58
FORM No. 6	PERMIT FOR MOVEMENT OF ANIMALS FOR IMMEDIATE SLAUGHTER	60
FORM No. 6a	PERMIT FOR MOVEMENT OF PERISHABLE CROPS TO MARKET	60
FORM No. 7	EPIDEMIOLOGICAL INVESTIGATION OF ANIMAL DISEASE	61
FORM No. 8	CERTIFICATE OF SLAUGHTER	65
FORM No. 9	OFFICIAL QUARANTINE	66
FORM No. 10	LIVESTOCK INVENTORY AND IDENTIFICATION CERTIFICATE.	67
ANNEX I	SPECIMEN SAMPLES TO SUBMIT FOR LABORATORY DIAGNOSIS	68
ANNEX II	COLLECTION AND PREPARATION OF SAMPLES OF VESICULAR DISEASES	72
ANNEX III	PROCEDURE FOR SUBMISSION OF SPECIMENS TO THE PLUM ISLAND DISEASE CENTER (PIADC)	77
ANNEX IV	PROCEDURE FOR SUBMISSION OF SPECIMENS TO THE PAN AMERICAN FOOT AND MOUTH DISEASE CENTER (PANAFTOSA)	78
ANNEX V	IATA RESTRICTED ARTICLE REGULATIONS	80
ANNEX VI	CONTENTS OF EMERGENCY ANIMAL DISEASE KIT	85
ANNEX VII	EXAMPLE OF QUARANTINE SIGN TO BE POSTED IN CONSPICUOUS PLACES	87

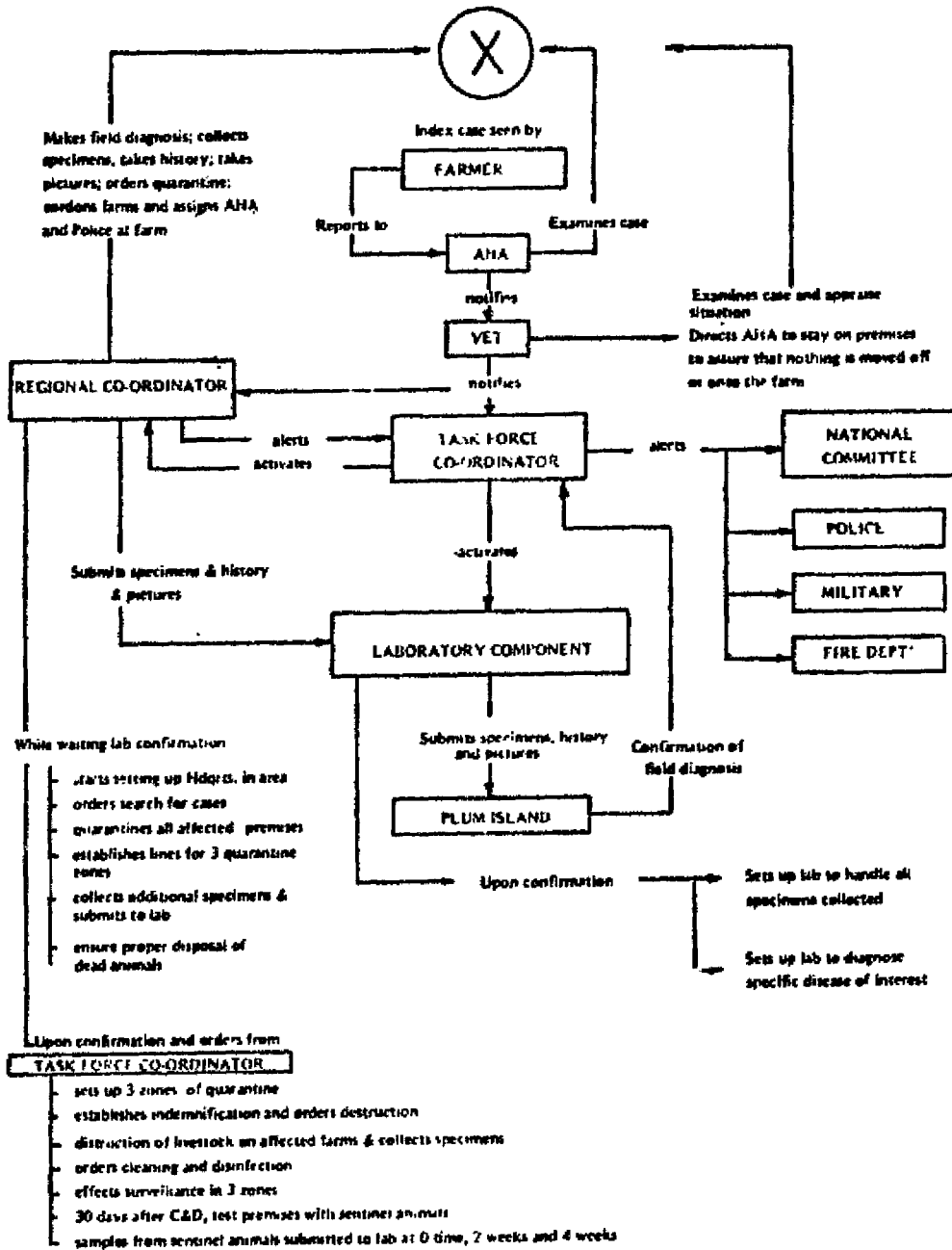
PART A.

OUTLINE OF SEQUENCE OF EVENTS

1. Suspicious index case seen by farmer.
2. Farmer notifies PAVO or AHA. In case the PAVO is not available the AHA contacts the PAVO in the nearest Parish who assumes responsibility.
3. PAVO and AHA go to farm to investigate. Reports to RVO who makes field diagnosis. If RVO cannot be reached, reports by phone to DVS. PAVO then proceeds through steps 4, 5 and 6.
4. If RVO or DVS (in absence of RVO) does not confirm field diagnosis ("False Alarm"), sequence stops.
5. If RVO makes field diagnosis of a foreign animal disease, notify officially the owner herd, quarantine farm, instructs AHA and PAVO to remain on the farm and to dispose of dead animals properly. RVO collects the necessary samples and sends them immediately to the Veterinary Laboratory. See Annex I, Specimen Samples to Submit for Laboratory Diagnosis, and Annex II, Collection and Preparation of Samples of Vesicular Diseases.
6. RVO notifies DVS.
7. DVS activates and puts into operation the emergency mobilization plan, alerts the Police, Military and Fire Department Components, (ALGO) and the National Emergency Animal Disease Committee.
8. Upon receipt of specimen, Team Leader (LTL) of Laboratory Component (LC) immediately ships by air (if possible, hand carries) the specimens to Plum Island Animal Disease Center in Greenport, New York. The PIADC Director must be alerted immediately by phone of the specimens' arrival. Phone at PIADC manned 24 hours a day, 365 days a year (516-323-2500), see Annex III. Procedures for submission of specimens to the PIADC, and Annex IV. Procedures for submission of specimens to the Foot-and-Mouth Disease Center (PANAPTOSA) in cases of Vesicular Diseases, and Annex V, IATA Restricted articles Regulations.
9. Regional Field Component (RFC) is mobilized. The RVO of the region where the index case was identified, assumes position of Regional Field Coordinator (RFCo) and acts as team leader for the Regional Field Component (RFC) and sets up Operation Headquarters (OHQ).

10. DVS assumes position as Task Force Coordinator (TFCo) mobilizes personnel from other regions to the outbreak area if the necessity arises. Orchestrates the coordination of the entire operation.
11. RVO, Police and Military map out outbreak area, using the 1970 census maps map check-points, and restrict all movements of animals, humans, and vehicles on and off the infected premises.
12. Field Component (FC) searches for cases, prepares farm inventories and submit the same to the RFCo who in turn submits this to the TFCo. RFCo serves quarantine notice and quarantines all affected premises found and collects additional specimens for laboratory confirmation at a later date.
13. Meanwhile, FC disposes of dead animals properly while awaiting laboratory confirmation of diagnosis.
14. Upon receipt of laboratory confirmation of diagnosis, information is immediately relayed to the NEADCOM who then meets in full session to determine the policy to be adopted. If laboratory diagnosis is negative ("False Alarm"), orders lifting of quarantine and inactivation of mobilization plan. Sequence steps.
15. If laboratory diagnosis confirms field diagnosis, the NEADCOM Promulgates destruction of sick and exposed animals.
16. TFCo implements policy adopted by NEADCOM; serves lifting of quarantine notice and de-activates mobilization plan in case of a "False Alarm". If otherwise, directs the FC through the RFCo to destroy all sick and exposed animals, to dispose them by deep burial, and or incineration and to completely clean and disinfect the premises.
17. The Chairman NEADCOM or his/her designated representative will serve as the official spokesman to the media in Kingston to minimize rumors and misunderstandings. The Chairman will brief the press periodically on the status of the outbreak.
18. After containment of outbreak, TFCo puts surveillance into effect in quarantine areas for a period of at least 3 months following de-population without re-stocking, and directs testing of affected farms with sentinel animals for a period of 4 weeks to commence not earlier than 30 days following cleaning and disinfection.

**FLOW CHART
MOBILIZATION OF THE NATIONAL
EMERGENCY ANIMAL DISEASE TASK FORCE**



Prepared August, 1979,
National Emergency Animal Disease Committee,
Division of Veterinary Science

**ILEGIBLE POR
MAL ESTADO
DEL DOCUMENTO
ORIGINAL**

1. COMPONENT: **NATIONAL EMERGENCY ANIMAL DISEASE COMMITTEE (NEADCOM)**

1.1 TASK: Promulgation of policies and coordination of input of the different Government Ministries and other agencies to prevent, control, and eradicate any foreign animal disease.

POLICY OPTION:

- a. - In the case where the outbreak is localized to one region then total immediate eradication as outlined in this manual is to be followed.
- b. - In the case where the disease involves more than one region then at the option of the committee a slaughter and salvage (for food) programme such as used in the Dominican Republic for ASF may be instituted, with total eradication as the ultimate objective of the programme.

1.2 FUNCTIONS:

1.2.1 Responsible Person - Chairman (=Minister of Agriculture).

1.2.1.1 Through NEADCOM, promulgates policies for the prevention, control, and eradication of foreign animal diseases.

1.2.1.2 Coordinates the various inputs and makes available the resources of the different ministries and agencies in achieving 1.2.1.1.

1.2.1.3 Makes representation with Cabinet for additional financial assistance needed and in the issuance of special orders or proclamations related to 1.2.1.1.

1.2.1.4 Ensures that all policies promulgated by the NEADCOM are implemented by the EADTAF.

1.2.1.5 Designates the DVS or the PVO in DVS's absence as TFCo.

2. COMPONENT: **EMERGENCY ANIMAL DISEASE TASK FORCE (EADTAF)**
- 2.1 TASK: Mobilization and execution of the national emergency animal disease preparedness plan and implementation of policies promulgated by the NEADCOM
- 2.2 FUNCTIONS:
- 2.2.1 Responsible Person - Task Force Coordinator (TFCo) (=Director of Veterinary Services).
- 2.2.1.1 Serves as the Executive Officer of the NEADCOM and ensures that all policies promulgated are expeditiously and effectively implemented.
- 2.2.1.2 Ensures that the EADTAF is in constant alert and readiness and schedules regular field exercises to enhance its reactive capacity.
- 2.2.1.3 Activates mobilization of the EADTAF as soon as a report of field diagnosis of a foreign animal disease is made by the RVO.
- 2.2.1.4 Makes immediate notification to the NEADCOM of the EADTAF mobilization.
- 2.2.1.5 Coordinates the activities of all the regions and assigns personnel as needed to the RFCo involved.
- 2.2.1.6 Orders the RFCo to proceed with depopulation and disinfection of infected areas as soon as diagnosis has been confirmed.
- 2.2.1.7 Through the RFCo, institutes surveillance after depopulation and disinfection.
- 2.2.1.8 Through the RFCo, serves official quarantine notices.

3. COMPONENT: **REGIONAL FIELD COMPONENT (RFC)**

3.1 TASK: The RFC is that component of the EADTAF assigned to a specific region whose task is to execute all the field operations in the event of an outbreak of an emergency animal disease.

The size of the RFC will be dependent on the livestock density, type of roads, weather conditions, number of available personnel, and geographical boundaries.

Normally, the RFC shall be composed of personnel within the region where the outbreak occurs. Authority for movement of support personnel from another region, if necessity occurs, is vested upon the TFCo.

3.2 FUNCTIONS:

3.2.1 Responsible Person - Regional Field Coordination (RFCo) (=Regional Veterinary Officer).

3.2.1.1 Establishes a field operating unit.

3.2.1.2 Selects location of headquarters which should be close to the infected areas, distance of which should not be more than half an hour drive to the most distant premises of the outbreak area.

3.2.1.3 Selects suitable headquarters building (e.g. school house, court house, parish office, etc.), and consider that it should have ample parking space, space for supplies and equipment storage, suitable communications and eating facilities, and should not be located where traffic will be a problem. In all cases it should not be located in the quarantine zone but rather outside the zone in nearest city where support can be obtained. It may be necessary to establish separate office for the FC within the quarantine zone depending on the communication and remoteness of the area.

- 3.2.1.4 Orders telephone services installed. A minimum of 3 lines should be ordered for immediate installation.
- 3.2.1.5 Makes available at all times a map (1970 Census Map) of the area under his/her regional jurisdiction, map out infected premises and quarantine area, and points out these areas to all RFC personnel.
- 3.2.1.6 Establishes communication with the local authorities, for example Health Dept., Ministry of Works, police, Fire Dept. and local practitioners; and ensures the security of the infected premises.
- 3.2.1.7 Refers all requests for information regarding the outbreak by the news media to the TFCo until an Information Officer (IO) from the Agency for Public Information has been assigned to the RFC; gives those requesting information the telephone number of the TFCo and explains that the latter has the most complete source of up-to-date information.
- 3.2.1.8 Establishes means of communication with personnel stationed at the infected premises.
- 3.2.1.9 Lists personnel complement of RFC and gives specific assignments to each to enable them to be put to work immediately upon arrival in the infected area.
- 3.2.1.10 Makes specific assignments to support personnel arriving from other regions.
- 3.2.1.11 Requests the assignment of a secretary from the office of the Regional Director or the Local Parish Office.
- 3.2.1.12 Meets with all personnel every evening for briefing on days activities and problems, institutes remedial measures to problems, and plans for activities for the following day.
- 3.2.1.13 Instructs all personnel that all information to be released to the media will be through the Information Officer only.
- 3.2.1.14 Gives daily briefing report at the end of the day, after 3.2.1.12, to the TFCo.
- 3.2.1.15 Keep in constant readiness an emergency animal disease kit for collection and shipment of specimens. (See Annex VI, Contents of Emergency Animal Disease Kit.)

3.2.2 Responsible Person - Regional Veterinary Officer Assigned
(RVO/A) (=Regional Veterinary Officer)

The RVO/A is selected among the RVO's whose region is not involved and designated to this post by the TFCo upon activation of the mobilization plan.

3.2.2.1 Assist the RFCo in the coordination of all activities of the RFC.

3.2.2.2 Attends to all logistical problems.

3.2.2.3 Serves as the responsible officer for the documentation of the outbreak.

3.2.2.4 Description of procedures for documentation of the outbreak:

During the height of the campaign, when attention is focused on the minute-to-minute business of eradicating the disease, the long-term record of the campaign is apt to be forgotten. Some things, unless they are set down at the time, cannot be correctly recalled later, and many valuable details are lost which would have been of great help to the programme historian. An accurate history is of considerable value in forming policies and plans for future disease eradication programmes. This particular aspect of the campaign is the direct responsibility of the RVO/A.

Dating Documents - Chronology is all-important to the historian. Every document used in the programme should be dated and time given when possible. This is important not only for history but for day-to-day administration.

Daily Diary - The best chronological record and one which can be used to correct occasional lapses in the dating of documents is a daily diary. The RVO/A should keep one, or see that one is kept, giving as fully as possible the events of the day. To the historian, this can easily be the most valuable document of the programme. Confidential matters should be made a part of the diary. While keeping some matters in confidence is highly important at the time, it is surprising how quickly the need runs out for confidential classification.

Maps - Maps showing the spread of the disease should be made, dated, and filed each week. Not only do they have current value - they can be photographed by newsmen - but they provide a valuable record of the month-to-month progress of the programme.

Photos - All photographs should be kept in a permanent file with a complete and accurate caption, including the date taken and the location of the site in the picture.

Clippings - A file of clippings is an aid to the historian if they are dated and bear the name of the journal on each one. A clipping without date and source is useless.

3.2.3 Responsible Person - Administrative Officer (AO)

This person is selected from the personnel complement of the Regional Office or the local Parish Office. The RFCo requests the Regional Director or the Parish Manager to assign the said person to the RFC. Under the direction of the RFCo:

- 3.2.3.1 Develops and initiates office procedures at the operations headquarters in cooperation with the RVO/A.
- 3.2.3.2 Obtains the necessary office space, personnel, supplies, and equipment necessary for the administrative and operational function of the RFC.
- 3.2.3.3 Prepares all fiscal and personnel requests as required.
- 3.2.3.4 Prepares the necessary budget and audit and control procedures for all equipment and supplies.
- 3.2.3.5 Ensures that all personnel going to quarantine areas are provided lunches and arranges catering with a local restaurant.
- 3.2.3.6 Establishes file system for all reports.
- 3.2.3.7 Arranges with the local Parish Fire Department for necessary equipment and manpower.

3.2.4. Responsible Person - Inspection and Diagnosis Officer (IDO)

This person is a VO or SVO designated by the TFCo to assume the post. The IDO reports directly to the RVO/A

- 3.2.4.1. Assists and co-operates with RFCo and PAVO's in mapping the quarantine and buffer zones.
- 3.2.4.2. Designates the quarantine and buffer zones with individual codes, i.e. Q1, Q2, etc. quarantine zones and B1, B2, B3, etc. buffer zones.
- 3.2.4.3. Assigns an inspector (a PAVO or AHA) to each zone or sector, and makes a chart of the assignments.
- 3.2.4.4. Orders the PAVO or AHA to immediately report all suspicious cases found during routine inspection.
- 3.2.4.5. Establish a list of qualified diagnosticians to verify and investigate suspicious reports. These diagnosticians should be capable of training other personnel in the infected premises on eradication procedures.
- 3.2.4.6. Together with the Information Officer, prepares information release for radio, television, and press to advise livestock owners to report to the RFC any suspicious sick animal; Living also in the release the telephone numbers for reaching the RFC.
- 3.2.4.7. Develops tracing procedure for all exposed animals and plot projected spread of disease on a map.
- 3.2.4.8. Consults with PAVO and AHA when calling in telephone reports and give information to RFCo.
- 3.2.4.9. Upon confirmation of field cases, alerts all personnel of the RFC.
- 3.2.4.10 Holds briefing sessions with all inspection and diagnosis personnel, and explains use of all forms.
- 3.2.4.11 Develops procedures for collecting field specimens and sending them to the laboratory.
- 3.2.4.12 Establishes filing system for inspection and diagnosis reports and forms.

3.2.5. Person Responsible- Supply Officer (SO)

This person is selected from among the staff of the Regional Office or the Local Parish Office . The RVO will request the the Regional Director or the Parish Manager to assign this person to the RFC.

General Supplies

- 3.2.5.1. Co-operates with AO and RVO/A in developing lists of immediate and anticipated supply needs, such as coveralls, rubber boots, pails, brushes, disinfectants, sprayers, etc.
- 3.2.5.2. Arranges for overnight laundering service for contaminated clothings.

Vehicles

- 3.2.5.3. Determines the number and type of vehicles needed.
- 3.2.5.4. Determine source(s) of vehicles.
- 3.2.5.5. Plans maintenance and security of vehicles, determines adequacy of local garage to handle repairs and servicing, or establishes a provisional repair shop.
- 3.2.5.6. Establishes a system for routine washing, cleaning and disinfection of vehicles.
- 3.2.5.7. Plans for and makes available emergency road service.

Procedures

- 3.2.5.8. Sets up procedures for issuance of and accountability of equipment.