

3.2.6. Responsible Person - Quarantine and Cleaning/Disinfection  
Officer (Q-C/DO).

This person is a SVO or VO designated by the TFCo to assume the post.  
The Q-C/DO reports to the RVO/A. In the case of a zoonotic disease or extremely large outbreaks this person may be the Director of the Veterinary Public Health Unit of the Ministry of Health.

- 3.2.6.1. Assists RFCo and PVO's in planning and establishing quarantine and buffer zones.
- 3.2.6.2. Posts disease warning signs on all roads at the outer perimeters of the quarantine and buffer zones.
- 3.2.6.3. Co-ordinates the establishment of 24 hour police and military patrols to cover all roads in both buffer and quarantine zones to control movement of animals, animal products, animal feeds and other farm products.
- 3.2.6.4. In case the disease involved can be transmitted via milk then the following is carried out:  
Establishes list of all dairy processing plants that have received or are receiving milk or milk products from the quarantine or buffer zone areas; arranges for inspectors to visit these plants and establishes control procedures.
- 3.2.6.5 At the description of Q-C/DO allows the movement on a permit basis of perishable crops, such as track garden products for human consumption, commercial poultry and eggs, and other non-animal products from infected farms after depopulation, and after the contaminated portion of the premises has been thoroughly soaked with a suitable disinfectant.
- 3.2.6.6. Allows the movement of all farm products other than livestock feed and straw, on permit basis, from farms within the quarantine and buffer zone that are not known to be infected.

- 3.2.6.7. Trains sufficient field personnel (AHA's) and establishes teams to clean and disinfect premises.
- 3.2.6.8. Assigns fire trucks with high pressure pumps and tanks mounted on them and smaller equipment to the different clean and disinfection teams.
- 3.2.6.9. Locates an area where facilities can be established to clean and disinfect all vehicles, heavy equipment and other miscellaneous items used by all field components. Considers availability of adequate water supply, impervious surfaces, and good drainage in selecting the site. Ensures re-cleaning and re-disinfection of every vehicle and piece of equipment that leaves the farm, even after it has been previously cleaned and disinfected on farm.
- 3.2.6.10. Determines availability of Regional or Parish insect and rodent control agencies and arranges for their services.
- 3.2.6.11. If additional personnel is needed from the Ministry of Health then the Director of Veterinary Public Health makes such arrangements.

**3.2.7. Responsible Person: Fire Chief (FC)**

This person is from the Local Fire Department where the outbreak exists. The services of this person will be requested by the AO

3.2.7.1. Makes available fire fighting equipment for use in the cleaning and disinfection operations.

3.2.7.2. Assists the Q-C/DO ensuring cleaning and disinfection of infected premises and materials.

3.2.8. Responsible Person: Appraisal Team (AT)

The members of the AT include the RFCo or his representative, a Representative of the Jamaica Livestock Association, and/or Jamaica Agricultural Society and the Regional Director of the Ministry of Agriculture or his duly designated representative.

3.2.8.1. Establishes appraisal value for each animal in the affected herd, and fills out and signs the indemnity form.

3.2.8.2. Through the RFCo, orders slaughter and distribution of livestock.

3.2.9. Responsible Person: Information Officer (IO)

This person is from the Agency for Public Information (API). TFCo will request the Minister of Agriculture to immediately assign and dispatch this person to the RFC.

- 3.2.9.1. Establishes an Office clearly recognizable as an information source of the RFC.
- 3.2.9.2. Compiles list of local news outlets (e.g. radio, newspaper, television).
- 3.2.9.3. Prepares pertinent information, publications, background materials, and photographs (when available) for TFCo.
- 3.2.9.4. Keep out press officers from quarantine areas and from wandering at will among the field officers.

4. COMPONENT: **MILITARY COMPONENT (MC)**

4.1 Tasks: The representative of the Jamaica Defence Force (JDF) in the NEADCOM alerts Military Unit nearest the region of the outbreak and assigns the necessary personnel to carry out functions.

4.2 Functions.

4.2.1. Responsible Person: Disposal and Heavy Equipment Officer (DHEO).

- 4.2.1.1. This person is a Military Officer (MO) assigned to the RFC from the nearest military unit on or near the Region. The TFCo will request for the assignment of this person from the National Military Headquarters through the NEADCOM representative of the JDF.
- 4.2.1.2. Confers with RFCo and RVO/A on anticipated needs for heavy equipment and materials to be used in the sanitary disposal of carcasses.
- 4.2.1.3. Locates all available heavy equipment in the area.
- 4.2.1.4. Locates an area for security and maintenance of equipment.
- 4.2.1.5. Establishes record-keeping system for all equipment.
- 4.2.1.6. Establishes disposal teams composed of MO riflemen and sufficient labour to handle the animals and slash the carcasses, provides the guns and ammunition for the purpose, provides coveralls and boots to each team member who is instructed to leave behind dirty coveralls when leaving infected premises.
- 4.2.1.7. Jointly with the Police Component (PC), sets up and man check points to ensure enforcement for quarantine in the areas involved.
- 4.2.1.8. Provides transport for personnel and equipment as requested.

5. COMPONENT: **POLICE COMPONENT (PC).**

5.1. Tasks: The representative of the Police Commission in the NEADCOM alerts Police Unit nearest the region of the outbreak and assigns the necessary personnel to carry out functions.

5.2. Functions.

5.2.1. Responsible Person: Officer-in-Charge of Police Detail (OIC/PD).

This person will be from the local Police Unit nearest the outbreak area. The TFCo will request the assignment of this person from the Superintendent of Police through the NEADCOM representative of the Constabulary.

5.2.1.1. Cooperates with RFCo and Q-C/DO in planning the number and location of guards and road patrols in the quarantine and buffer zone areas.

5.2.1.2. Posts round-the-clock guards on infected premises once laboratory confirmation is received, and this is carried out, until de-population is completed and the contaminated portions of the premises have been soaked in a suitable disinfectant, afterwards security will be the responsibility of the Q-C/DO.

5.2.1.3. Obtains additional personnel for guard and patrol duty from the MC, as needed.

5.2.1.4. Issues pertinent orders to guards on infected premises and patrols.

5.2.1.5. Assists in providing radio communications islandwide, if needed.

6. COMPONENT: **FIELD COMPONENT (FC)**

6.1. Surveillance for presence of a foreign animal disease. Notification of the RVO of the possible presence of a foreign animal disease in his/her parish; and implementation of measures to contain, control, and eradicate outbreak. This unit may operate out of the Regional Office of RCo or a sub-office may be set up in the quarantine zone depending on communications and remoteness of the area.

6.2. Functions.

6.2.1. Person Responsible: Parish Veterinary Officer (PAVO).

He is the VO of the Parish where the outbreak occurs, or the VO from other regions mobilized by the TFCo into the outbreak area to assist in the containment, control and eradication of the disease.

6.2.1.1. Ensures that AGA's are in constant readiness and that each knows his/her specific functions.

6.2.1.2. Ensures that each AGA has the necessary supplies and materials (e.g. disinfectants, boots, coveralls, etc.).

6.2.1.3. After making initial field diagnosis, , instructs AHA to cordon affected herd and dispose dead, sick animals by deep burial, or incineration and makes an immediate inventory of all animals on the farm and remains there until relieved by the police, which will not occur until laboratory confirmation is received.

6.2.1.4. Notifies RVO of the presence of a foreign animal disease.

6.2.1.5. After activation and mobilization of the EADTF, searches for cases and identifies all infected herds; and makes telephone reports immediately after examination of each herd (see Part G, Form 2).

6.2.1.6. Supervises the proper disposal of dead, and the cleaning and disinfection of infected premises (see Part E) Cleaning and Desinfection Procedures).

- 6.2.1.7 Implement and coordinate all activities promulgated by the RFCs and work jointly with personnel from other components assigned to the RFC.
- 6.2.1.8. Through the PO and MO assigned, ensures that no movement of animals are made in the quarantine area.
- 6.2.1.9. Implements surveillance after depopulation and disinfection.
- 6.2.1.10. Ensures that field personnel do not spread infection from farm to farm by ensuring that all personnel change clothes and disinfect their boots.
- 6.2.1.11. Serves as assistant RVO-A as needed. This is particularly important, while awaiting laboratory confirmation as the PAVO knows the individuals and resources available within the Parish where the outbreaks of the disease occurred.

6.2.2. Responsible Person: Animal Health Assistants (AHA)

- 6.2.2.1. Examine animals in general and those referred by farmers, suspicious of having a foreign animal disease.
- 6.2.2.2. Reports to the PAVO of his Parish without delay, the presence of suspicious foreign animal disease cases; or to the RVO or PAVO in the nearest Parish if PAVO cannot be located, for immediate investigation.
- 6.2.2.3. Upon confirmation, implements all instructions of PAVO (or RVO or DVS, as the case may be) to prevent spread of the disease. Become immediately vigilant and stay on farm (that is 24 hours per day).
- 6.2.2.4. Is responsible for ensuring that all instruction as outlined in this Manual, and issued orally by the PAVO, are carried out by staying on the farm. This is done by the AHA until "laboratory confirmation" is received. The police are not to be used until laboratory confirmation.
- 6.2.2.5. After confirmation of field diagnosis by RVO, under supervision of PAVO, cordons affected herds and disposes of dead and sick animals properly.
- 6.2.2.6. After activation of EADTF, under supervision of RFCo and PAVO, search for cases and identify all infected herds particularly within the buffer zones.
- 6.2.2.7. Insures destruction of all infected animals by MC.
- 6.2.2.8. Implements on-the-spot cleaning or disinfection procedures.

7. COMPONENT: Laboratory Component (LC)

7.1. TASK: Handling and sending of specimen to reference laboratory for confirmation of field diagnosis, and setting up of local capability for laboratory diagnosis of the disease after confirmation by reference laboratory.

7.2. FUNCTIONS:

Responsible Person: Laboratory Team Leader (LTL)

This person is an SVC previously designated by the DVS to assume this function.

- 7.2.1. Assembles and keeps in constant readiness additional emergency disease kits for the collection and shipment of specimens.
- 7.2.2. Makes arrangement with the airlines and the reference laboratory (see Annexes III, IV and V) on how specimens could be shipped as quickly as possible.
- 7.2.3. Handles shipment or hand-carries specimen to the PIADC, Greenport, New York.
- 7.2.4. Once the EADREP is activated, immediately makes arrangement to receive incoming specimen from the RFC and stores them until confirmation is made and local laboratory diagnostic capabilities are established.
- 7.2.5. Once local laboratory capabilities are set up to handle diagnosis, supervises the operation of said laboratory.
- 7.2.6. Designates members of LC.
- 7.2.7. Designates staff member to assist RFCO with post-mortem examination and specimen collection if required.

8.       **COMPONENT:   LEGAL COMPONENT (LC)**

8.1       Tasks: Interpretation and promulgation on   the Animal (Disease and Importation) Act.

8.2       Functions.

8.2.1.   Responsible Person: Legal officer:

This person is requested by the TYCo of the Attorney General's Department. This is coordinated with the Chairman of the NEADCOM,

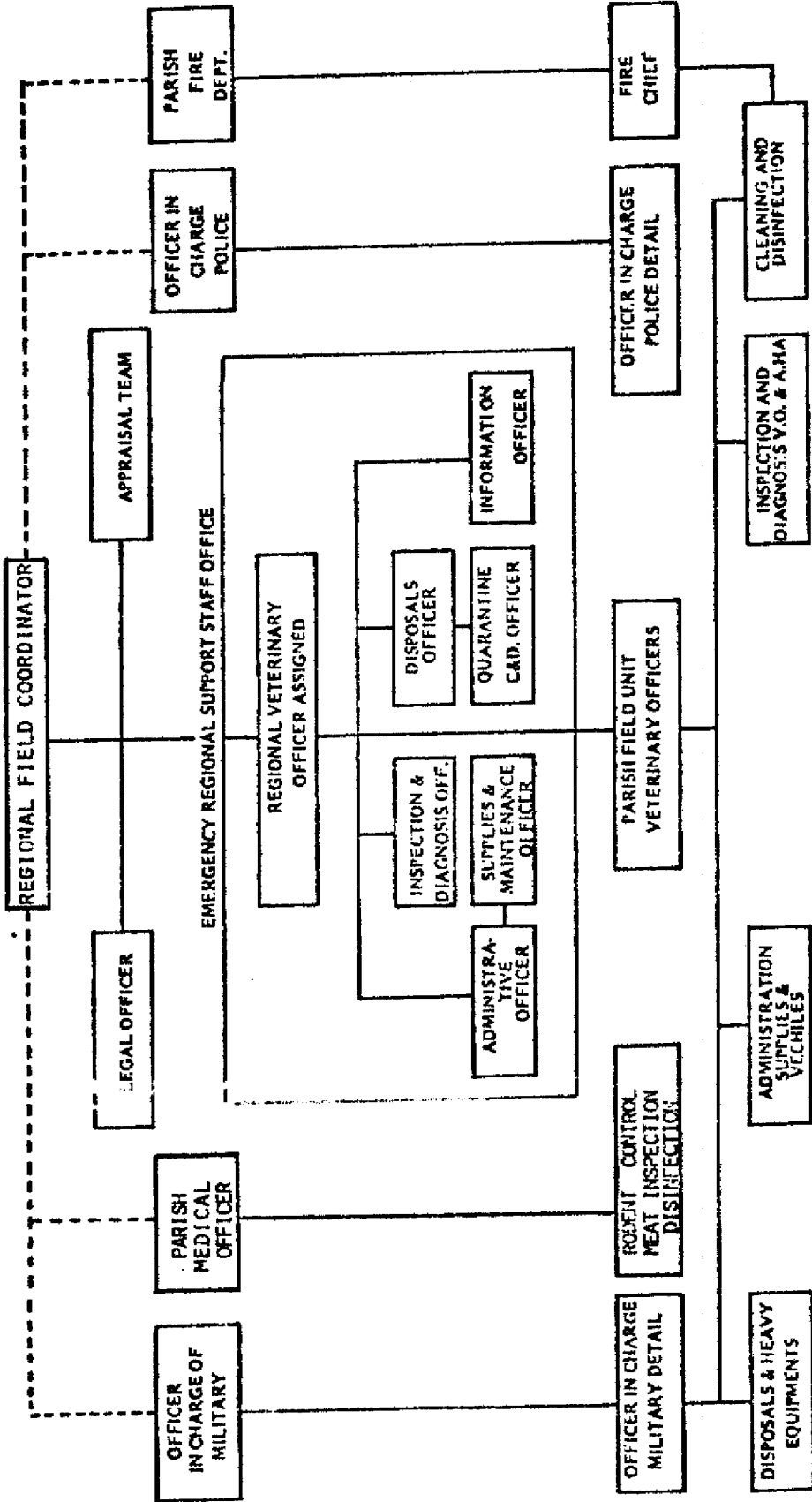
8.2.1.1.  Interprets existing legislation related to animal health. Jointly with DVS prepares and publishes new rules and regulations.

2.  Prosecution of the violators of the Animal (Disease and Importation) Act.

3.  Advises RFCo on all legal matters.

4.  Handles for the Government any law suits resulting from quarantines, destruction of animals, buildings, etc., which might arise from time to time as a result of the implementation of the Animal (Disease and Importation) Act and the programme or policies adopted by the NEADCOM to prevent, control and eradicate epidemic animal disease.

ORGANIZATION OF THE REGIONAL FIELD  
COMPONENT OF NATIONAL EMERGENCY ANIMAL DISEASE TASK FORCE



Division of Veterinary Services

Prepared: August 1979  
National Emergency Animal Disease Committee

Ministry of Agriculture

PART C      QUARANTINE PROCEDURES
-----------------------------------

1. AUTHORITY TO QUARANTINE

- 1.1. The responsibility to quarantine individual premises rest with the TFCo who in turn delegates this to the RFCo involved. To assure rapid eradication, immediate control must be established and maintained over the infected farm, and over a prescribed quarantine area surrounding the infected premises.
- 1.2. When the diagnosis is confirmed, a Government quarantine will be immediately placed on the affected area. The area quarantined will be determined by factors such as terrain, pattern of livestock movements in the local area, livestock concentration, and the characteristics of the disease involved.

## 2. QUARANTINE OF SUSPECTED PREMESIS AND SUSPENSION OF ALL MOVEMENTS

When a condition requiring emergency procedures is encountered, the investigating PAVC instructs the AHA to remain on affected premises to ensure that nothing (viz., humans, animals, vehicles, etc.) moves off or on to the farm. The RVO confirms field diagnosis, issues quarantine order and makes a list- ing of precisely the number and species of animals involved, restrictions imposed, and reason for quarantine. Example: "Suspected vesicular disease". The owner or the caretaker will be informed of the suspicion and ordered to restrict all movements to or from the premises pending Laboratory confirma- tion of diagnosis. The RVO alerts the DVS who activates mobilization of the EADTAF. The RFCo instructs local police to enforce the quarantine under the direct supervision of the PAVC.